

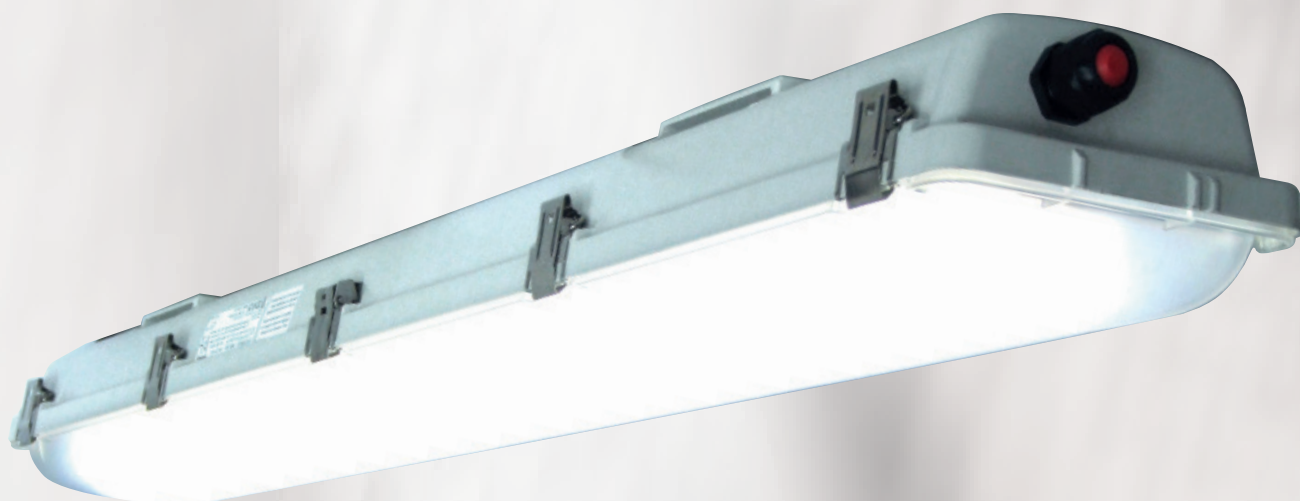
Explosion protected linear light fittings

CROUSE-HINDS  
SERIES



KLL2 LED

Ex-Linear Light Fitting Series in LED Technique for Zone 2 and 22



**EATON**

*Powering Business Worldwide*

# KLL2 Ex-Linear light fitting

Linear light fitting in LED technique

## The efficient LED solution for your explosion protected lighting concept

the linear light fitting series KLL2 LED combines the latest light technology with the requirements of a harsh and hazardous environment. The explosion protected luminaires are approved for gas-Ex and dust-Ex areas according to the ATEX directive 2014/34/EU. They are proven and designed according to the latest standards for use in gas-Ex-areas Zone 2 and dust-Ex-areas Zone 22.

With their high efficiency of up to 143 LM/W this lighting series enables high energy savings. High luminous flux of up to 8700 lm and the high colour rendering Ra typically 80 enables the use of this luminaires according to the workplace di-

rective in nearly every production sites.

Optionally as V-CG-S version, this light fitting can be connected to a CEAG emergency lighting system.

Optionally these light fittings can be dimmed by DALI interface.

## Easy to install

The external mounting system enables a quick and save mounting of this robust light fitting.

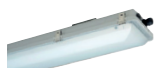


## Features

- High efficient & energy saving LED technology up to 143 lm/W
- Robust design for reliable use under harsh and aggressive ambient conditions
- High luminous flux up to 8700 lm
- High colour rendering Ra typically 80
- Dimmable by DALI interface (optional)
- Connection to a CEAG emergency lighting system (V-CG-S) (optional)
- High degree of protection IP 66

## Ordering details

Type/version	Power	Luminous flux	Efficiency	weight	Through-wiring	gland/thread	Screw plug	Blanking plug	Order No.
<b>KLL2 LED (Zone 2, 22)</b>									
KLL2 5L 1/5 M25K	31 W	4,420 lm	143 lm/W	4.7 Kg	single sided	3 x M25 Plastic	1	1	1 5002 500 101
KLL2 5L 2/5 M25K	31 W	4,420 lm	143 lm/W	4.7 Kg	double sided	3 x M25 Plastic	1	1	1 5002 500 103
KLL2 5L 1/5 M20M	31 W	4,420 lm	143 lm/W	4.7 Kg	single sided	3 x M20 Metal	1	1	1 5002 500 109
KLL2 5L 2/5 M20M	31 W	4,420 lm	143 lm/W	4.7 Kg	double sided	3 x M20 Metal	1	1	1 5002 500 111
KLL2 6L 1/5 M25K	46 W	6,060 lm	132 lm/W	4.7 Kg	single sided	3 x M25 Plastic	1	1	1 5002 600 101
KLL2 6L 2/5 M25K	46 W	6,060 lm	132 lm/W	4.7 Kg	double sided	3 x M25 Plastic	1	1	1 5002 600 103
KLL2 6L 1/5 M20M	46 W	6,060 lm	132 lm/W	4.7 Kg	single sided	3 x M20 Metal	1	1	1 5002 600 109
KLL2 6L 2/5 M20M	46 W	6,060 lm	132 lm/W	4.7 Kg	double sided	3 x M20 Metal	1	1	1 5002 600 111
KLL2 9L 1/5 M25K	61 W	8,700 lm	143 lm/W	4.9 Kg	single sided	3 x M25 Plastic	1	1	1 5002 900 101
KLL2 9L 2/5 M25K	61 W	8,700 lm	143 lm/W	4.9 Kg	double sided	3 x M25 Plastic	1	1	1 5002 900 103
KLL2 9L 1/5 M20M	61 W	8,700 lm	143 lm/W	4.9 Kg	single sided	3 x M 20 Metal	1	1	1 5002 900 109
KLL2 9L 2/5 M20M	61 W	8,700 lm	143 lm/W	4.9 Kg	double sided	3 x M 20 Metal	1	1	1 5002 900 111

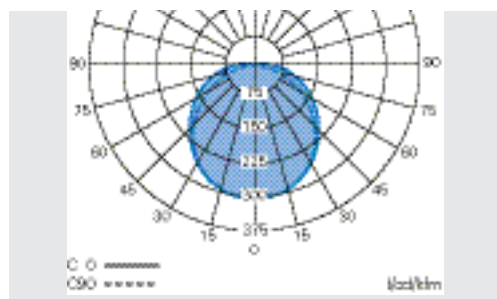




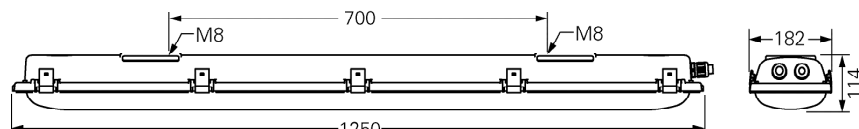
## Technical data

<b>KLL2 LED (Zone 2, 22)</b>	
EC-Type Examination Certificate	IBExU 16 ATEX B 012
Marking accd. to 94/9/EC	D II 3 G Ex nA IIC T4 Gc D II 3 D Ex tc IIIC T80 °C Dc
Permissible ambient temperature	-30 °C up to +55 °C (9L:+50 °C) - see operating instruction
Life expectancy LEDs	L80/B10 >50.000 h @ max. temp.
Rated voltage	220 - 240 V AC / DC
Rated current	see ordering details
Frequency	0/50 - 60 Hz
Power factor cos φ	≥ 0.90
Circuit	electronic ballast
Protection class	I
Lamp / Illuminant	LED
Colour rendering index Ra	typically 80
Light colour	5000 K
Rated luminous flux	see ordering details
Dimensions (L x W x H)	1250 x 182 x 114 mm
Connecting terminals	5 x L, N, PE cage-clamp terminals, max. 4 mm <sup>2</sup> single wire per terminal
Enclosure colour	light grey
Enclosure material	glass-fibre reinforced polyester
Weight	see ordering details
Cable glands / gland plates / enclosure drilling	Ex-e gable glands 3 x M 25 x 1.5 (plastic) (2 cable glands, 1 plugged.; 1 screw plug) or 3 x M20 metal reducing ring
Degree of protection acc. to EN 60529	IP66
Protective cover / protective bowl	Polycarbonate, opaque

## Polar curve KLL2



## Dimension drawing KLL2



Dimensions in mm



Eaton's Crouse-Hinds Division

# The safety you rely on.

See the complete offering of Hazardous and Industrial Products at [www.crouse-hinds.de](http://www.crouse-hinds.de).

**U.S. (Global Headquarters):  
Eaton's Crouse-Hinds  
Division**

1201 Wolf Street  
Syracuse, NY 13208

(866) 764-5454  
FAX: (315) 477-5179  
FAX Orders Only:  
(866) 653-0640

[CrouseCustomerCTR@Eaton.com](mailto:CrouseCustomerCTR@Eaton.com)

**For more information:**

If further assistance is required, please contact an authorized Eaton Distributor, Sales Office, or Customer Service Department.

**Australia**

Phone +61-2-8787-2777  
Fax +61-2-9609-2342  
[crousehindsanz@eaton.com](mailto:crousehindsanz@eaton.com)

**China**

Phone +86-21-2899-3600  
Fax +86-21-2899-4055  
[ECHsales@eaton.com](mailto:ECHsales@eaton.com)

**Great Britain**

Phone +44-247-630-89 30  
Fax +44-247-630-10 27  
[sales5@eaton.com](mailto:sales5@eaton.com)

**India**

Phone +91-124-4683888  
Fax +91-124-4683899  
[cchindia@eaton.com](mailto:cchindia@eaton.com)

**Canada**

Toll Free +1-800-265-0502  
Fax +1-800-263-9504  
Fax orders only:  
+1-866-653-0645

**Korea**

Phone +82-2-3484-6783  
Fax +82-2-3484-6778  
[CCHK-sales@cooperindustries.com](mailto:CCHK-sales@cooperindustries.com)

**Mexico/Latin America/  
Caribbean**

Phone +52-555-804-4000  
Fax +52-555-804-4020  
[ventascentromex@eaton.com](mailto:ventascentromex@eaton.com)

**Spain**

Phone +34-9-37362710  
Fax +34-9-37835055  
[sales.CCH.es@cooperindustries.com](mailto:sales.CCH.es@cooperindustries.com)

**Middle East (Dubai)**

Phone +971-4-427-2522 / 2500  
Fax +971-4-429-8521  
[CHMESales@Eaton.com](mailto:CHMESales@Eaton.com)

**The Netherlands**

Phone +31-10-2452145  
Fax +31-10-2452121  
[CHRD\\_mail@Eaton.com](mailto:CHRD_mail@Eaton.com)

**Norway**

Phone +47-32-244600  
Fax +47-32-244646  
[CHLloffice@eaton.com](mailto:CHLloffice@eaton.com)

**Singapore:**

Phone +65-6645-9888  
Fax +65-6297-4819  
[CHSI-Sales@Eaton.com](mailto:CHSI-Sales@Eaton.com)

**Turkey**

Phone +90-216-464-20-20  
Fax +90-216-464-20-10  
[infoEGTurkey@eaton.com](mailto:infoEGTurkey@eaton.com)

**Russia**

Phone +7-495 510-24-27  
Fax +7-495 510-24-28  
[info@cooper.ru.com](mailto:info@cooper.ru.com)  
[www.cooper-russia.ru](http://www.cooper-russia.ru)

**Eaton's Crouse-Hinds Division**

Neuer Weg – Nord 49  
D-69412 Eberbach

Phone +49 (0) 6271/806-500  
Fax +49 (0) 6271/806-476  
E-mail [info-ex@eaton.com](mailto:info-ex@eaton.com)  
Internet [www.crouse-hinds.de](http://www.crouse-hinds.de)

**Eaton**

1000 Eaton Boulevard  
Cleveland, OH 44122  
United States  
[Eaton.com](http://Eaton.com)

© 2016 Eaton Corporation  
All Rights Reserved  
Printed in Germany  
Publication No. BR 300 8000 ####  
July 2016

Changes to the products, to the information contained in this document, and to prices are reserved; so are errors and omissions. Only order confirmations and technical documentation by Eaton is binding. Photos and pictures also do not warrant a specific layout or functionality. Their use in whatever form is subject to prior approval by Eaton. The same applies to Trademarks (especially Eaton, Moeller, and Cutler-Hammer). The Terms and Conditions of Eaton apply, as referenced on Eaton Internet pages and Eaton order confirmations.

**Eaton's Crouse-Hinds Division**  
1201 Wolf Street  
Syracuse, NY 13208  
(866) 764-5454  
[CrouseCustomerCTR@Eaton.com](mailto:CrouseCustomerCTR@Eaton.com)

Eaton is a registered trademark.

All other trademarks are property of their respective owners.

